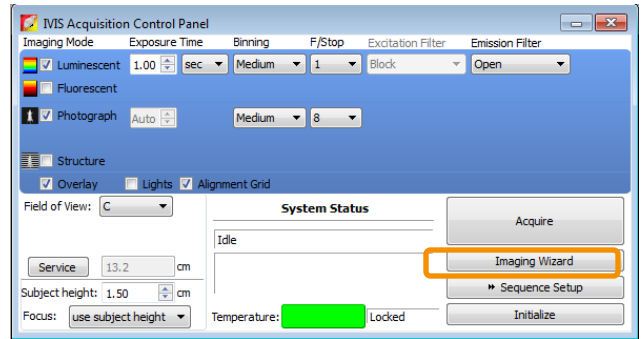




Imaging Wizard

The Imaging Wizard is a powerful tool for creating acquisition sequences. The Wizard is accessed from the Control Panel and guides the user to create optimal sequences for bioluminescent and fluorescent imaging. The wizard helps you select the correct application, probe, and filter settings. To aid with filter selection, the wizard provides a powerful graphical setup tool that displays excitation and emission characteristics of a particular probe along with the filters that are available in the IVIS system. As with any other software wizard, simply answer the questions and select the options you would like and the wizard will make setting up sequences a snap.

1. Select the Imaging Wizard button from the Control Panel.
2. The Imaging Wizard set-up screen will appear and you can select assistance with multiple variations of either Bioluminescence or Fluorescence imaging.



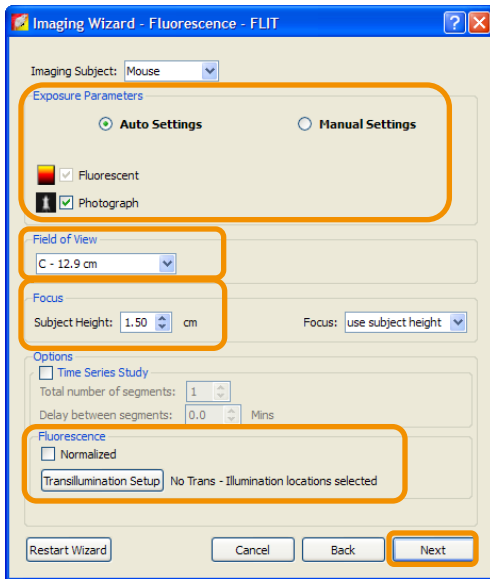
3. You can then select the reporter being used.

4. The Excitation/Emission filters deemed suitable for the desired results are automatically selected, although it is possible to add/remove additional filters.

Probe Name	Excitation Peak	Emission Peak
1 Tomato	554	581
AF680		
AP750		
Cy5.5		
Doxorubicin		
DsRed		
EGFP		
ICG		
1 mCherry		
mPlum		
placZs		

5. For more detailed information about the filter selections click **Filter Config**. A grid will be displayed that will represent all of the filter choice combinations available to you.

Selected pairs are highlighted in **brown**. To select or unselect pairs, click in the cell and choose **Select** or **Unselect**. Newly selected cells will turn brown – deselected cells will turn white. After you have selected your filters, click **Close** and then **Next**.



6. The final screen allows for input of details such as auto/manual exposure, FOV, subject height and transillumination set-up.

For more information on any of these settings refer to the User Guide or the relevant Tech Note.

7. Once the parameters are selected, choose next and sequence acquisition window will be populated according to your selections.

