

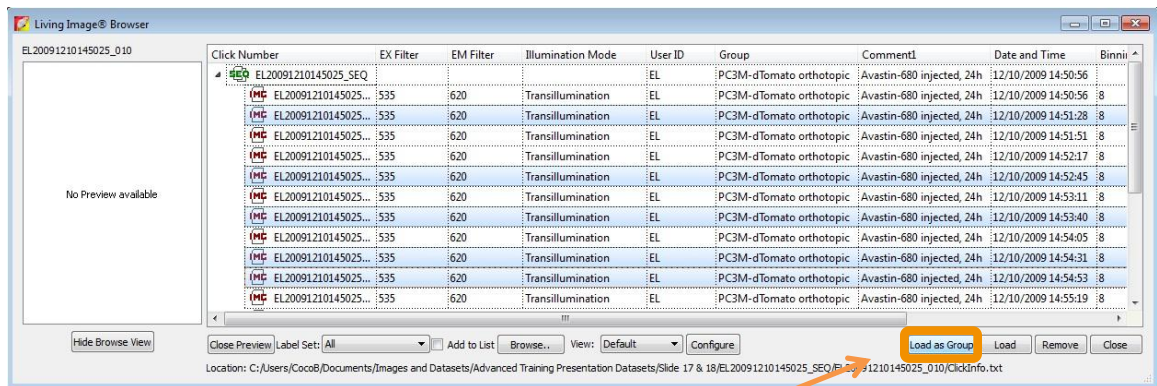


Loading Groups of Images

For many studies, it may be desirable to open a group of images together, for example, analyzing multiple days of longitudinal study side by side using the same scale.

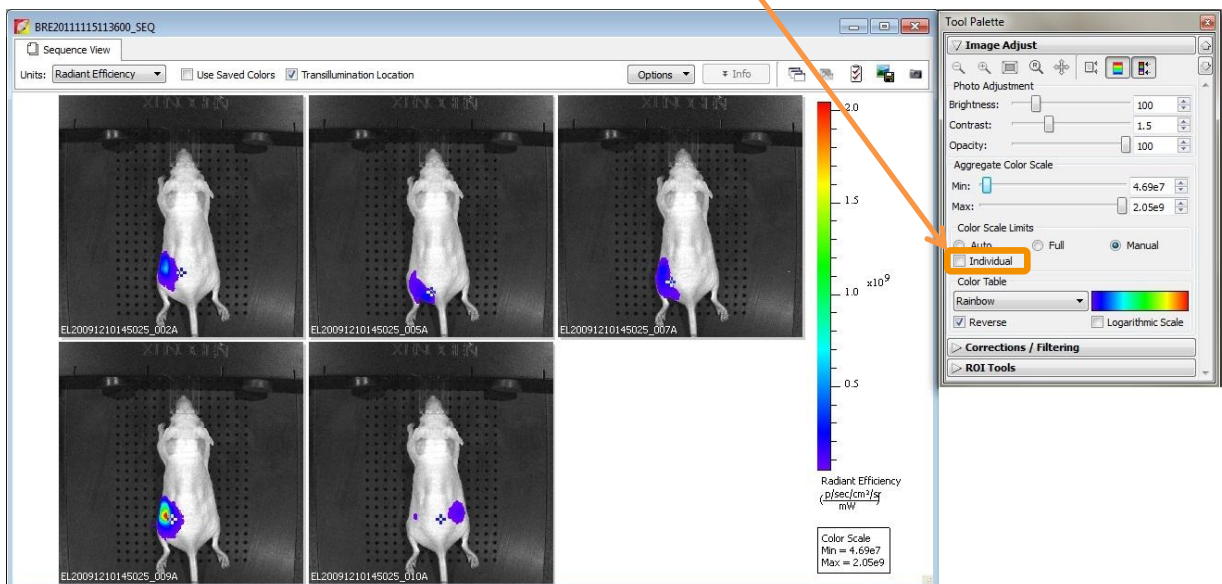
Open the Imaging Browser and using the Control [Ctrl] key, highlight the images you would like to open.

NOTE: If the images you wish to open are contained in a sequence file as indicated by the green **SEQ** in the browser window, please expand this file so that you can see the individual image. Whole sequences will not load as groups.

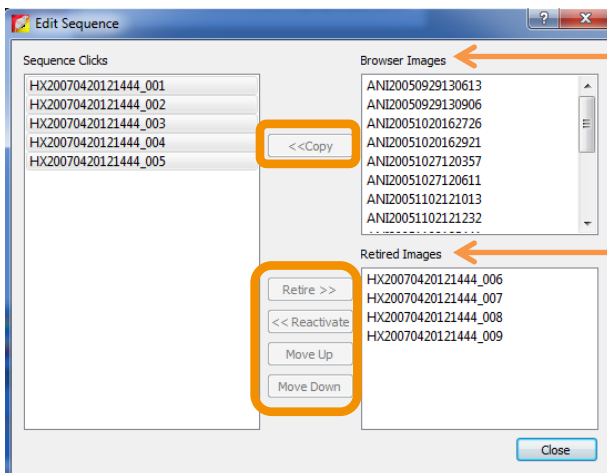
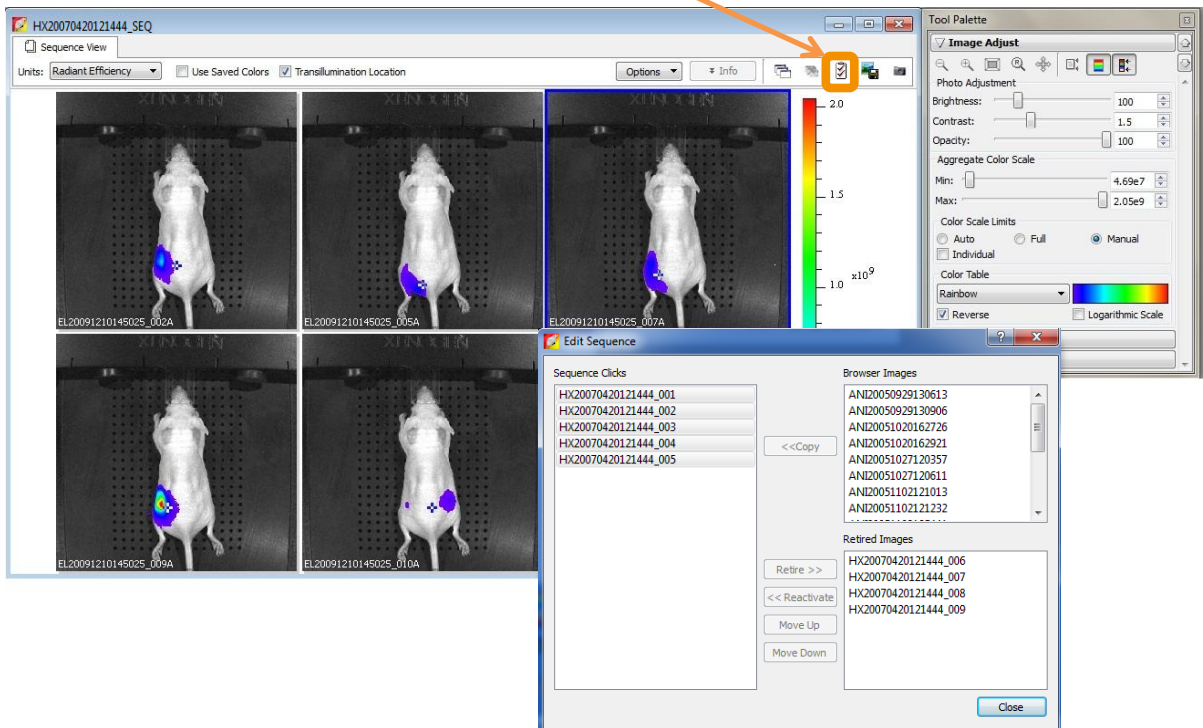


Click on **Load as Group**

The images will open side by side in a single window. To set the images to the same scale, uncheck the individual box in the Image Adjust tab of the Tool Palette. Adjusting the scale bar will then adjust every image in the sequence simultaneously.



To remove or reorder the images inside of a Sequence Group, click the Edit Sequence icon on the top right of the window.



Single images open in the Browser will be displayed in the **Browser Images** window and can be added directly to the created sequence.

If the newly created group has been saved, removed images will appear in the **Retired Images** window and can later be re-inserted.

By clicking (or control-clicking for multiple) image numbers in the **Sequence Clicks** box, you can remove or re-order the images in your sequence using the **Retire**, **Move Up** or **Move Down** buttons.