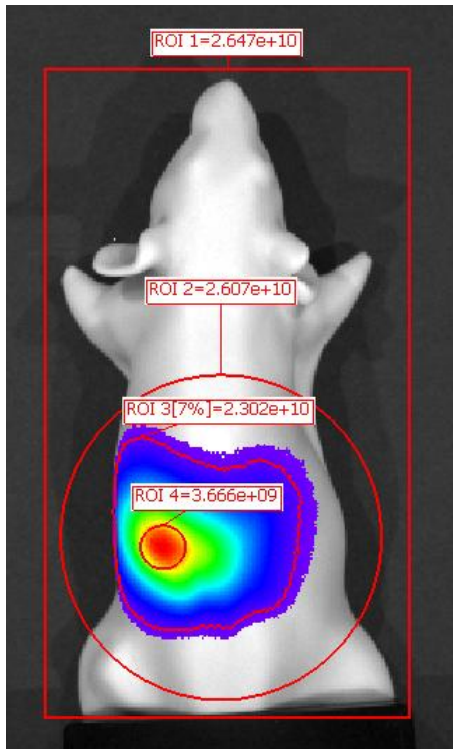




Drawing ROIs

If you are considering the proper method for drawing regions of interest (ROIs), please take these thoughts into consideration.

You can use the circle, square, free draw, or grid (for well plates) to draw your ROIs. ROI selections are user specific and are dependent on the model you are analyzing. It is irrelevant which shape you use for a particular ROI.



Remember the rule - **larger ROIs are better.** Background bioluminescence levels are very low so it is advantageous to draw larger ROIs to include the entire area of signal diffusion. Do not focus on the intense area generally represented by the red color. One must also take into account the entire diffusion pattern.

Notice in the image to the left that the square, large circular and contour ROIs have a similar total flux – whereas the small circular ROI concentrating on the most intense portion of the surface intensity represents just 14% of your signal (determined by expressing it as a percentage of the mean of the other 3 ROIs).

Note: An auto drawing feature is available to assist with ROI drawing, if you decide to take advantage of this feature you will notice that the **Threshold %** slider will be activated at the bottom of the **ROI Tools** section of the **Tool Palette**. Recommended setting for the threshold is between 5-10%. Free draw gives you complete control over the shape of the ROI. Draw by clicking at areas you would like to connect and then close the ROI by clicking the right mouse button.

