

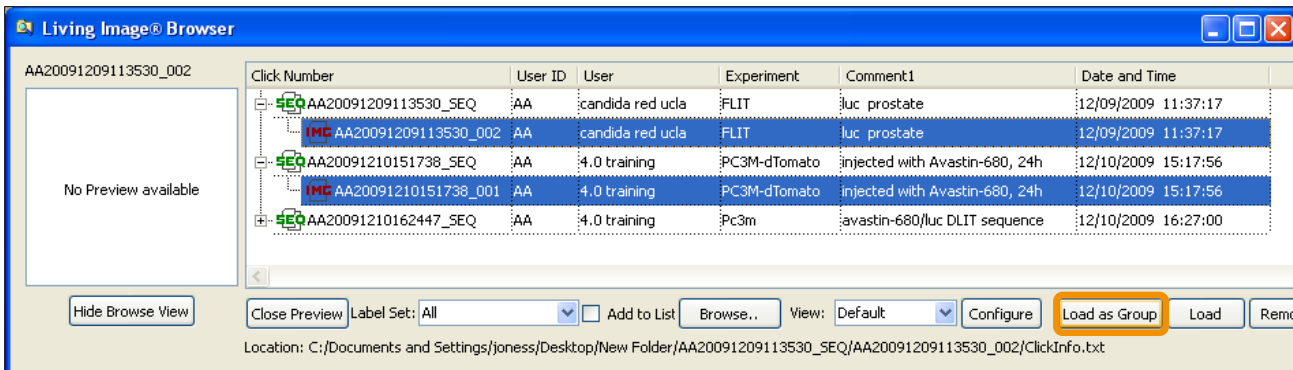


Image Overlay – 2D

See also: **Load Groups of Images Tech Note 12** and **Image Overlay – 3D Tech Note 10**.

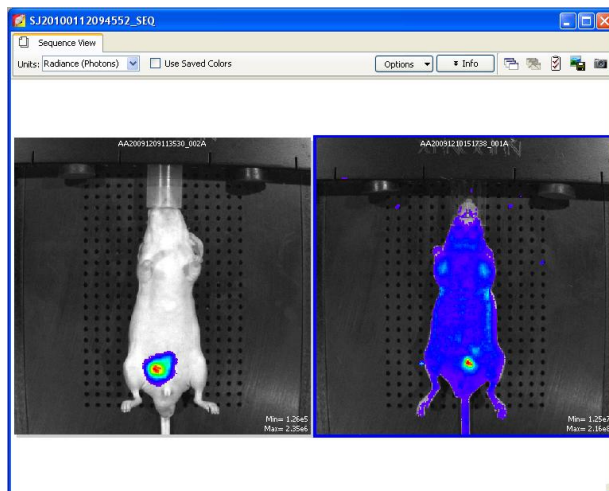
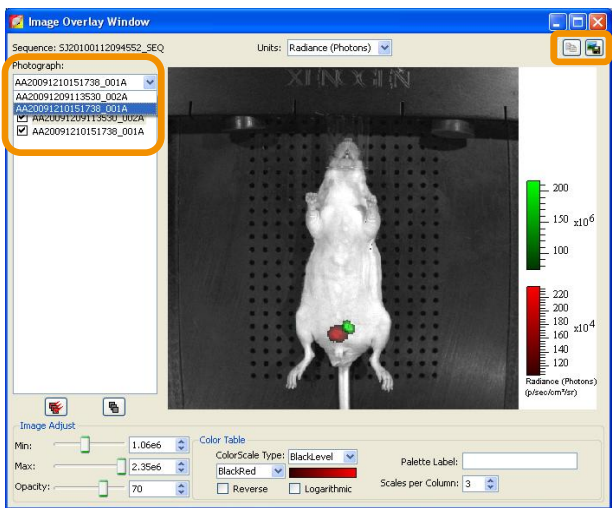
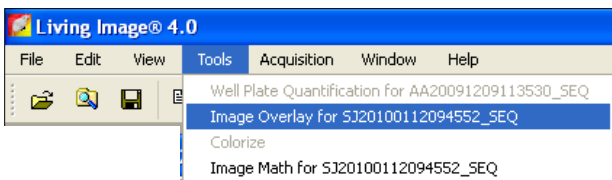
Not only is it possible to load multiple images as a group, for example multiple days of a longitudinal study, but it is also possible to load multiple images and **Overlay** them i.e. bioluminescent tumor with fluorescent targeted drug acquired in two separate images.

Firstly, select the images of choice using the **Data Browser** tool and **Load Images as a Group**



This example shows a Bioluminescent image (Left) and a Fluorescent image (right) loaded, with the tissue auto-fluorescence being evident.

You can choose to Overlay the images from the Living Image drop down menu as shown below.



The first option you have is to select which photograph to use as the underlying image. Remember, if the images are from different animals or at different times the **Image Overlay** is not suitable. This feature is only useful for dual labeled markers in the same animal.

Once you have selected the photo layer, you can select and adjust each superimposed luminescent/fluorescent image. Options available are **Intensity Scale**, **Opacity**, **Color scale/scheme**.

Note: Intensity scales will only display units that the two images share in common. If there is a bioluminescent source, Radiant Efficiency will not be an option for display.

It is then possible to save the image in multiple formats such as .PNG .JPG .BMP.